



ussoccer.com



Official Technology Solution of the  
U.S. Soccer Referee Program



# HOW TO COMPLETE AN ONLINE ASSESSMENT

[USSOCCER.GAMEOFFICIALS.NET](http://USSOCCER.GAMEOFFICIALS.NET)

U.S. SOCCER FEDERATION  
1801 S. PRAIRIE AVE  
CHICAGO, IL 60616



# Contents

<b>GENERAL INFORMATION .....</b>	<b>3</b>
<b>U.S. SOCCER – ASSESSMENT IDENTITY .....</b>	<b>3</b>
<b>U.S. SOCCER – ASSIGNMENT IDENTITY .....</b>	<b>3</b>
<b>VIEW ASSESSMENTS.....</b>	<b>3</b>
<b>LOGIN AND HOMEPAGE INFORMATON.....</b>	<b>4</b>
<b>HOW TO ADD AN ASSESSMENT .....</b>	<b>5</b>
<b>1. ADD THE GAME.....</b>	<b>5</b>
<b>2. ADD THE OFFICIALS .....</b>	<b>7</b>
<b>OFFICIALS’ SEARCH .....</b>	<b>8</b>
<b>3. ADD THE SCORE.....</b>	<b>10</b>
<b>ENTERING ASSESSMENT INFORMATION .....</b>	<b>11</b>
<b>BEGIN THE ASSESSMENT .....</b>	<b>11</b>
<b>RELEASE ASSESSMENT TO OFFICIALS .....</b>	<b>13</b>
<b>EMAIL ASSESSMENT TO OFFICIALS .....</b>	<b>14</b>
<b>VIEWING THE COMPLETED ASSESSMENT .....</b>	<b>15</b>
<b>OFFICIALS – ONLINE ASSESSMENT SYSTEM.....</b>	<b>16</b>
<b>WEB LINK .....</b>	<b>16</b>



## **GENERAL INFORMATION**

### **U.S. SOCCER - ASSESSMENT**

USSOCCER.GAMEOFFICIALS.NET is the parent data system that contains all the referees and assessors registered for the current year. There are three identities within the parent: U.S. Soccer – Assessments, U.S. Soccer – Assignment, and U.S. Soccer – Learning.

#### **U.S. SOCCER – ASSESSMENT IDENTITY**

All current registered grade 8 and above referees and assessors reside in U.S. Soccer – Assessments. This is the group that will be used for all assessments not contained within the U.S. Soccer – Assignment identity. Assessments done on leagues and games that are assigned by U.S. Soccer are done on the U.S. Soccer – Assignment identity. The remaining assessments can be done in U.S. Soccer – Assessments since it contains a listing of all registered referees. Only registered assessors will be able to enter information for assessments.

This is an after-the-fact assessment reporting system. Assessors will be assigned to games per their state association’s protocol/procedures. Once the assessment is done, the assessor enters their assessment information (game info, officials’ names and assessment data) in U.S. Soccer – Assessments. SDAs and assessors will not be allowed to enter games for future dates. This group is not an assignment program.

As an assessor, you will have the ability to search for the officials on the game through several different parameters – USSF ID, e-mail address, name, state association, month and day of birth (not year). This will search the entire database of currently registered referees.

Completed assessments will be emailed to the officials at this time (PDF link). The official can also log in and view his/her assessment online.

#### **U.S. SOCCER – ASSIGNMENT IDENTITY**

This is the current assignment/assessment system. It is used strictly for assignments made by U.S. Soccer. Assessments for these games are assigned in advance and accepted/declined by the assessor.

Officials/Assessors may be included in this identity only by U.S. Soccer.

#### **VIEW ASSESSMENTS**

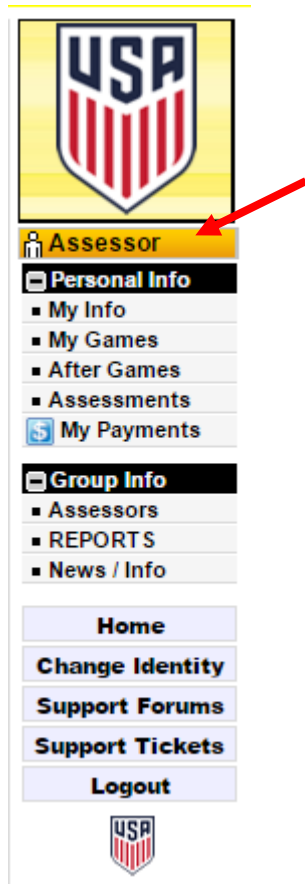
SDAs, SRAs, and National Assessors have the ability to review assessment information in both the Assignment and Assessment identities. SDAs and SRAs are limited to officials/assessors registered through their state association.

Assessors that are currently in the Assignment identity will do as they are doing now. They will have to “Change Identity” to the Assessment identity when they are doing an “out-of-system” assessment.

## LOGIN AND HOMEPAGE INFORMATION

Log in using your username and password supplied by U.S. Soccer.

LINK: [HTTP://USSOCCER.GAMEOFFICIALS.NET/](http://ussoccer.gameofficials.net/)



The system uses one username and password for multiple categories such as Assessor, Official, SRA and SDA called 'identities'.

When you log in make sure your "Identity" is set to Assessor. This is noted in the top left of the screen just under the U.S. Soccer Crest. If it is not, you change your 'Identity at the bottom of the column – click on 'Change Identity'.

### Personal Info

**My Info** - Your information that you can update

**My Games** - A list of your games selected by date range

**After Games** - Click on the "Assess Officials" and you will see the game info along with the assessment for the officials only in your state.

**Assessments** - List of assessments for officials

### Group Info

**Assessors** - List of Assessors

**Reports** - Various reports available to you as an Assessor

**News/Info** - Information, Memos, Tutorials

**Change Identity** - Utility to change your identity/category

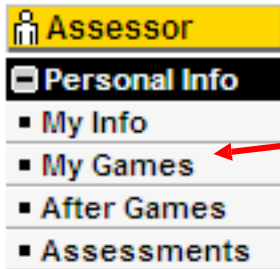
U.S. Soccer Crest – Link to [www.ussoccer.com](http://www.ussoccer.com)

# HOW TO ADD AN ASSESSMENT

Adding an assessment to ussoccer.gameofficials.net is a three step process:

1. Add the Game to the system
2. Add the Officials to the game
3. Complete the assessment

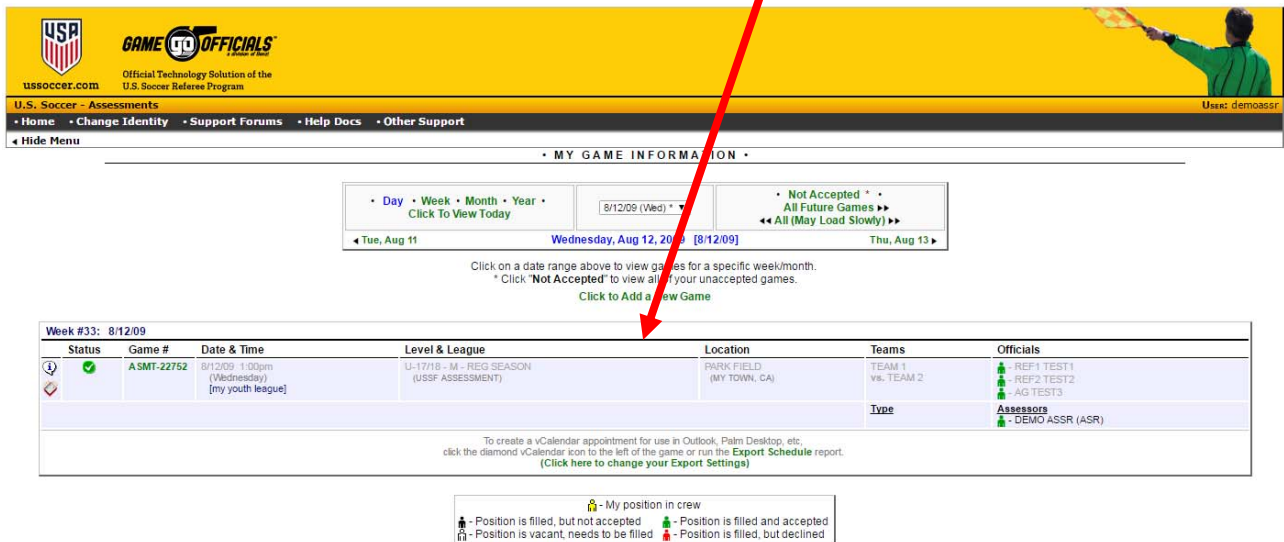
## 1. ADD THE GAME



- Assessor**
- Personal Info**
- My Info
- My Games**
- After Games
- Assessments

Click on My Games to go to your game schedule

Click to 'Add a New Game'



U.S. Soccer - Assessments

Home Change Identity Support Forums Help Docs Other Support

MY GAME INFORMATION

Day Week Month Year 8/12/09 (Wed) Not Accepted All Future Games All (May Load Slowly)

Tue, Aug 11 Wednesday, Aug 12, 2009 [8/12/09] Thu, Aug 13

Click on a date range above to view games for a specific week/month. \* Click "Not Accepted" to view all of your unaccepted games. Click to Add a New Game

Status	Game #	Date & Time	Level & League	Location	Teams	Officials
	ASMT-22752	8/12/09 1:00pm (Wednesday) [my youth league]	U-17/18 - M - REG SEASON (USSF ASSESSMENT)	PARK FIELD (NY TOWN, CA)	TEAM 1 vs. TEAM 2	REF1 TEST1 REF2 TEST2 AG TEST3 Assessors DEMO ASSR (ASR)

To create a vCalendar appointment for use in Outlook, Palm Desktop, etc. click the diamond vCalendar icon to the left of the game or run the **Export Schedule** report. (Click here to change your Export Settings)

My position in crew

- Position is filled, but not accepted
- Position is filled and accepted
- Position is vacant, needs to be filled
- Position is filled, but declined

U.S. Soccer - Assessments User: demoassr

[Home](#)
[Change Identity](#)
[Support Forums](#)
[Help Docs](#)
[Other Support](#)

U.S. Soccer - Assessments

• GAME MAINTENANCE •

**Game Information** Date, Level, Location, Teams, etc

Game # TBD League USSF ASSESSMENT

Game Status Approved

Game Date 8/25/2015 (M D YYYY)

Game Time 7:00  AM  PM [12:01 AM = TBD]

Gender  Male  Female  Coed  N/A

Game Age / Level U-17/18  STATE CUP

Location JOHNSON PARK #1

City BIG TOWN State OH (if known)

Home Team BARRACUDA\_DEMO (Leave blank if unknown)

Away Team TIGERS\_DEMO (Leave blank if unknown)

**Additional Game Information** Description, Notes

League / Competition Greater Big Town League  League / Competition Level of This Game  
(Visible by anyone with access to this game: Admin, Official, Team, etc)

Notes 1st place vs 4th place team  
(Visible only by assignors and assessor admins)

Quick Add (Return To Add After Saving)

This information is completed automatically. Do not enter information:

- Game # (entered automatically – Do Not Enter)
- Game Status (automatically set to Accepted)

Complete the game information:

- Game Date
- Game Time (all times are local time)
- Gender
- Game Age / Level
- Location (Venue/Field)
- City
- Home Team
- Away Team
- League/Competition
- Notes (visible only to Assignors and Assessor Admin)
- SAVE

Note: You will be able to add team scores after you add the officials.



You can also edit game information if needed. This is located on the top line titled 'Game Details' to the right.

## OFFICIALS' SEARCH

This page allows you to search the entire listed of currently registered referees in the U.S. Soccer database in [ussoccer.gameofficials.net](http://ussoccer.gameofficials.net). It does not contain the grade 9 referees.

• OFFICIAL SEARCH •

---

**Game Details**

USSF ASSESSMENT (Reg Season)					
Game #	Date & Time	Level & League	Location	Teams	Officials
ASMT-22752 <small>(Approved)</small>	8/12/09 1:00pm <small>(Wednesday) [my youth league]</small>	U-17/18 - M - REG SEASON <small>(USSF ASSESSMENT)</small>	PARK FIELD <small>(MY TOWN, CA)</small>	TEAM 1 vs. TEAM 2	<div style="display: flex; gap: 5px;"> <div style="color: green;">♣</div> - REF1 TEST1  <div style="color: green;">♣</div> - REF2 TEST2  <div style="color: green;">♣</div> - AG TEST3  <a href="#" style="font-size: small; text-decoration: none;">Add 4th Position</a> </div>

Add Officials to the Game using the Search Options below. When finished, click the Assess Officials button to begin the assessments

[Assess Officials](#)

---

**Search by Name, Email, or USSF ID**

Enter an exact Email Address, exact 16-digit USSF ID, or at least 3 characters of a Last Name

Name, Email, or USSF ID

State Assoc - N/A -

Birth Month / Day - N/A - - N/A -

[SEARCH](#)

(State Assoc and Birth Month/Day are ignored when searching by Email or USSF ID)

There are several methods for you to search for an official on your game:

- Email
- USSF ID number
- Last Name, First Name
- Association (State Association)
- Birth Month/Date (Year is not required)

Notice: The button just below the Officials list allows you to add a 4<sup>th</sup> official to the game. The official's name "TEST" is entered in this example.

**Search by Name, Email, or USSF ID**

Enter an exact Email Address, exact 16-digit USSF ID, or at least 3 characters of a Last Name

Name, Email, or USSF ID

State Assoc - N/A -

Birth Month / Day - N/A - - N/A -

[SEARCH](#)

(State Assoc and Birth Month/Day are ignored when searching by Email or USSF ID)

The search displays a list of referees that match the search inquiry parameters. The more parameters you enter, the better the results.

Matching Users in U.S. Soccer - Assessments				Click a Name below to Select
Name	Assoc	Grade	Location	
<a href="#">MN, TEST</a> <small>(MN, TEST U)</small>	MN	08	ICICLE MN	
<a href="#">TEST_DT, A</a>	IL	08	IL	
<a href="#">TEST_NJ, ALAN</a>	NJ	08		
<a href="#">TEST1, REF1</a>	IL	08	CHICAGO IL	
<a href="#">TEST2, REF2</a>	TXS	08	TEST CITY TX	
<a href="#">TEST3, AG</a>	CAN	08	CALIF CA	
<a href="#">TEST3, REF3</a>	TXS	08	DALLAS TX	
<a href="#">TEST4, AG</a>	CAN	08	TEST CA	
<a href="#">TEST4, REF</a>	USSF	08	MY TOWN TX	
<a href="#">TEST5, REF</a>	USSF	08	TX	



Click on the officials you are looking for and select the position you wish to place that official. In this case, select 'Set as Referee' for "TEST1, REF1".

Matching Users in U.S. Soccer - Assessments				Click a Name below to Select
Name	Assoc	Grade	Location	
TEST1, REF1	IL	08	CHICAGO IL	
<ul style="list-style-type: none"> <li>Set as Referee</li> <li>Set as AR1</li> <li>Set as AR2</li> <li>[Cancel]</li> </ul>				

The official is assigned to the position you selected.

Game Details					
USSF ASSESSMENT (Reg Season)					
Game #	Date & Time	Level & League	Location	Teams	Officials
ASMT-22747 (Approved)	8/25/09 7:00pm (Tuesday) [Greater Big T own League]	U-17/18 - M - STATE CUP (USSF ASSESSMENT)	JOHNSON PARK #1 (BIG TOWN, OH)	BARRACUDA_DEMO vs. TIGERS_DEMO	- REF1 TEST1 - [ TBD ] - [ TBD ]
<p>Add Officials to the Game using the Search Options below When Finished, click the button below to begin the assessments</p> <p>Assess Officials</p>					

The search screen appears. Begin your search for the next official in your assessment. Do this for each official.

The position of the official you already selected is greyed out. You may change the position of the official by 'Replace' him/her from that position.

*Note:* Only officials that are registered for the current registration year are in the Assessment database. If you cannot find the official you are looking for, please contact the SRA.

Select the next official you assessed to the appropriate position on the crew.

Once you have selected all the officials for the crew, select 'Assess Officials'.

Game Details					
USSF ASSESSMENT (Reg Season)					
Game #	Date & Time	Level & League	Location	Teams	Officials
ASMT-18571 (Approved)	8/25/15 7:00pm (Tuesday)	U-17/18 - M - REG SEASON (USSF ASSESSMENT)	TOYOTA PARK (CHICAGO, IL)	U.S. SOCCER ALL STARS vs. CHICAGO FIRE ALL STARS	- REF1 TEST1 - REF2 TEST2 - REF3 TEST3 - [ TBD ]
<p>Add Officials to the Game using the Search Options below. When finished, click the Assess Officials button to begin the assessments</p> <p>Assess Officials</p>					

### 3. ADD THE SCORE

At this point, you may add the score of the game. Click on 'Edit' just under the names of the teams.

• ASSESSMENT SUMMARY •

Game Details						
Game #	Date & Time	Level & League	Location	Score	Teams	Officials
ASMT-22747	8/25/09 7:00pm (Tuesday)	U-17/18 - M - STATE CUP (USSF ASSESSMENT)	JOHNSON PARK #1 (BIG TOWN, OH)	TBD TBD <a href="#">[Edit]</a>	BARRACUDA_DEMO vs. TIGERS_DEMO	<ul style="list-style-type: none"> <li> - REF1 TEST1 (6 - TXS)</li> <li> - REF2 TEST2 (7 - TXS)</li> <li> - REF3 TEST3 (7 - TXS)</li> <li><b>Assessors</b></li> <li> - DEMO ASSR (ASR)</li> </ul>

Individual Assessments						Officials, Position, Type
	Official	Position	Type	Result	Released to Official	
<a href="#">Begin Assmnt</a>	REF1 TEST1	Referee	N/A	TBD		
<a href="#">Begin Assmnt</a>	REF2 TEST2	AR1	N/A	TBD		
<a href="#">Begin Assmnt</a>	REF3 TEST3	AR2	N/A	TBD		

No Assessments have been entered for this game.  
When one or more Assessments have been entered, you will be able to RELEASE the Assessments for this game.

Enter the score for each team and SAVE.

Game Score			
Final Score		Kicks From The Mark	
TEAM 11	<input type="text" value="1"/> (Home)	<input type="text" value="0"/> (Only If Applicable)	
TEAM 30	<input type="text" value="2"/> (Away)	<input type="text" value="0"/> (Only If Applicable)	
<input type="checkbox"/> Do Not Post This Score			

Enter the score for the Home and Away teams at the end of the game in the boxes above. If you do not know the score or are not able to post it at this time, click the "Do Not Post This Score" checkbox above.

Once entered and saved, you can begin the assessment.

Game Details						
Game #	Date & Time	Level & League	Location	Score	Teams	Officials
ASMT-22747	8/25/09 7:00pm (Tuesday)	U-17/18 - M - STATE CUP (USSF ASSESSMENT)	JOHNSON PARK #1 (BIG TOWN, OH)	TBD TBD <a href="#">[Edit]</a>	BARRACUDA_DEMO vs. TIGERS_DEMO	<ul style="list-style-type: none"> <li> - REF1 TEST1 (6 - TXS)</li> <li> - REF2 TEST2 (7 - TXS)</li> <li> - REF3 TEST3 (7 - TXS)</li> <li><b>Assessors</b></li> <li> - DEMO ASSR (ASR)</li> </ul>

Individual Assessments						Officials, Position, Type
	Official	Position	Type	Result	Released to Official	
<a href="#">Begin Assmnt</a>	REF1 TEST1	Referee	N/A	TBD		
<a href="#">Begin Assmnt</a>	REF2 TEST2	AR1	N/A	TBD		
<a href="#">Begin Assmnt</a>	REF3 TEST3	AR2	N/A	TBD		

No Assessments have been entered for this game.  
When one or more Assessments have been entered, you will be able to RELEASE the Assessments for this game.

## ENTERING ASSESSMENT INFORMATION

### BEGIN THE ASSESSMENT

Game Details						
Game #	Date & Time	Level & League	Location	Score	Teams	Officials
ASMT-22747	8/25/09 7:00pm (Tuesday)	U-17/18 - M - STATE CUP (USSF ASSESSMENT)	JOHNSON PARK #1 (BIG TOWN, OH)	TBD [Edit]	BARRACUDA_DEMO vs. TIGERS_DEMO	<ul style="list-style-type: none"> <li>REF1 TEST1 (6 - TXS)</li> <li>REF2 TEST2 (7 - TXS)</li> <li>REF3 TEST3 (7 - TXS)</li> <li><b>Assessors</b></li> <li>DEMO ASSR (ASR)</li> </ul>

Individual Assessments						Officials, Position, Type
	Official	Position	Type	Result	Released to Official	
<input type="button" value="Begin Assmnt"/>	REF1 TEST1	Referee	N/A	TBD		
<input type="button" value="Begin Assmnt"/>	REF2 TEST2	AR1	N/A	TBD		
<input type="button" value="Begin Assmnt"/>	REF3 TEST3	AR2	N/A	TBD		

No Assessments have been entered for this game.  
When one or more Assessments have been entered, you will be able to RELEASE the Assessments for this game.

Click 'Begin Assessment' for the official you wish to fill in the assessment information. This takes you to the assessment form.

Complete the assessment form. Make sure you fill in all the appropriate areas.

• ASSESSMENT MAINTENANCE •

You can save your work at any time by clicking the SAVE button at the bottom of the page. You will be allowed to save even if all the questions are not answered. It is a good idea to save your work every 5 to 10 minutes so you don't lose any data if your internet connection goes down while you are completing the Assessment.

Disable Auto-Save Notifications (Every 10 Minutes)

Game Details - ASMT-18571						
Date & Time	Level & League	Location	Score	Teams	Officials	
8/25/15 7:00pm (Tuesday)	U-17/18 - M - REG SEASON (USSF ASSESSMENT)	TOYOTA PARK (CHICAGO, IL)	TBD	U.S. SOCCER ALL STARS vs. CHICAGO FIRE ALL STARS	<ul style="list-style-type: none"> <li>REF1 TEST1 (08 - IL)</li> <li>REF2 TEST2 (08 - TXS)</li> <li>REF3 TEST3 (08 - TXS)</li> <li><b>Assessors</b></li> <li>DEMO ASSR (ASR)</li> </ul>	

**US Soccer Pro Assessment** 2011 edition - ARs updated 10/2015

Assessment of REF1 TEST1 as Referee Type: N/A

Last Updated: 4/20/16 3:01PM CST

Inline Question Explanations: [\[Show\]](#) / [\[Hide\]](#)

Degree of Difficulty \* \*\* NO DATA \*\*

**Reasons for difficulty \***

Typing Area: Small - Medium - Large

**Referee Score**

Overall \*

**Control of the Game**

**Positive Points \*** - Correct and consistent application of the laws of the game.  
Appropriate disciplinary sanctions, tactical approach and management of the game.

Typing Area: Small - Medium - Large

**Areas for Improvement \***

Typing Area: Small - Medium - Large

While working on an assessment you can 'SAVE' the assessment and return to it later to complete it. It will be marked as 'Edit Assessment'.

You can "Edit Assessment" for any assessment that has not been completed.

	Official	Position	Type	Result	Released to Official
<a href="#">Edit Assmnt</a>	REF1 TEST1	Referee	(M)aintenance	TBD	In Progress
<a href="#">Begin Assmnt</a>	REF2 TEST2	AR1	N/A	TBD	
<a href="#">Begin Assmnt</a>	REF3 TEST3	AR2	N/A	TBD	

Click on 'Begin Assessment' to enter the assessment information for the appropriate official.

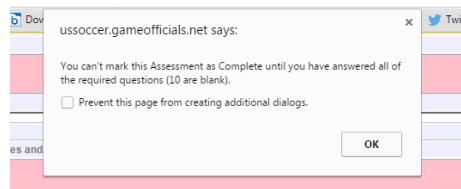
Once you have completed an assessment, that is, you are finished with the assessment, check the 'Mark Assessment as Complete for this Official' and SAVE.

Question \* - Item will be displayed to Official once Assessment is released

[Mark Assessment as Complete for this Official](#)  
(You will still be able to edit the Assessment)

[SAVE \(Modify Assessment\)](#)

A notice message appears if you have not filled in all the appropriate information and indicates in red what information is missing.



Complete the missing information and SAVE.

When you have completed the assessments for all the officials, the Assessment Summary page appears.

At this point you can still edit or modify the assessments.

• ASSESSMENT SUMMARY •

Game Details						
Game #	Date & Time	Level & League	Location	Score	Teams	Officials
ASMT-18571	8/25/15 7:00pm (Tuesday)	U-17/18 - M - REG SEASON (USSF ASSESSMENT)	TOYOTA PARK (CHICAGO, IL)	TBD [Edit]	U.S. SOCCER ALL STARS vs. CHICAGO FIRE ALL STARS	<ul style="list-style-type: none"> <li>REF1 TEST1 (08 - IL)</li> <li>REF2 TEST2 (08 - TXS)</li> <li>REF3 TEST3 (08 - TXS)</li> <li>Assessors</li> <li>DEMO ASSR (ASR)</li> </ul>

Individual Assessments						
	Official	Position	Type	Result	Released to Official	
<a href="#">Edit Assmnt</a> - CR - <a href="#">Preview</a>	REF1 TEST1	Referee	N/A	73	No	
<a href="#">Edit Assmnt</a> - CR - <a href="#">Preview</a>	REF2 TEST2	AR1	N/A	76	No	
<a href="#">Edit Assmnt</a> - CR - <a href="#">Preview</a>	REF3 TEST3	AR2	N/A	76	No	

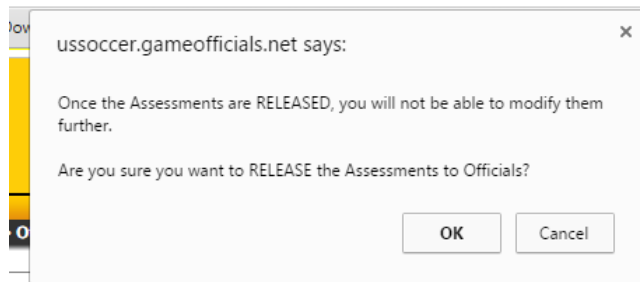
**Do not RELEASE until you have entered an Assessment for each applicable Official**  
(Once you RELEASE the Assessments, you can not modify them further)

[Release Assessments To Officials](#)

## RELEASE ASSESSMENT TO OFFICIALS

This is where you publish the assessments to the officials.




When you click on [Release Assessments To Officials](#), you will receive a notice:



Note: Once you RELEASE the assessments, you cannot modify them further.

Click OK to release the assessments. Once you click this, it takes you to the Assessment Summary page.

## EMAIL ASSESSMENT TO OFFICIALS

Individual Assessments (Released: 4/20/16 3:10PM CST)						Officials, Position, Type
	Official	Position	Type	Result	Released to Official	
<a href="#">View Assmnt</a> or 	REF1 TEST1	Referee	N/A	73	Yes <a href="#">(Click to Hide)</a>	
<a href="#">View Assmnt</a> or 	REF2 TEST2	AR1	N/A	76	Yes <a href="#">(Click to Hide)</a>	
<a href="#">View Assmnt</a> or 	REF3 TEST3	AR2	N/A	76	Yes <a href="#">(Click to Hide)</a>	

Click '*Email Assessments to Crew*' to send the individual assessments to the appropriate official.

A message is generated to each official with a web link. The web link allows the referee to view and save/retrieve a PDF version of their individual assessment.

USSoccer.GameOfficials.net • Email Assessments •

**Game #ASMT-22747 / USSF ASSESSMENT**

Date & Time	Level & Sport	Location	Teams
8/25/09 7:00pm (Tuesday)	U-17/18 - M - STATE CUP (Soccer)	JOHNSON PARK #1 (BIG TOWN, OH)	BARRACUDA_DEMO vs. TIGERS_DEMO

**Click the Send Email link next to each official below**  
 or Copy and Paste the info below into your email client for each official  
**Note: The Email Body for each Official looks similar, but is unique.**  
**Do not send the same email to all officials!**

Subject:

---

**Send Email REF1 TEST1** Added: 8/27/09 7:59PM

To:

Body:

---

**Send Email REF2 TEST2** Added: 8/27/09 8:13PM

To:

Body:

---

**Send Email REF3 TEST3** Added: 8/27/09 8:14PM

To:

Body:

You may add your personal message to the email. However, do not alter the link to the assessment. This is how the official receives their individual assessment.

## VIEWING THE COMPLETED ASSESSMENT

- Assessor**
- Personal Info**
- My Info
- My Games
- After Games
- Assessments**

Go to 'Assessments' to view your assessments

You can filter the games you view by selecting 'Game Filters' and select the criteria for game selection (Team, Age, Level, Gender, Date Range). If you do not see the assessment you are looking for, check these filters, especially the date range.

After you adjust the 'Game Filters', click on 'Reload'.

• ASSESSMENT MAINTENANCE •

**Game Filters** Change the Games in the List Below

Sport [ All ]      Loc Area [ All ]      Age - All - \*  
 League [ All ]      Complex [ All ]      Level - All - \*  
 Team - All Teams - \*      Location [ All ]      Gender - All - \*

Day \*      Week \*      Weekend \*      Month \*      \* Auto fill dates below  
 - SELECT -      - SELECT -      - SELECT -      August 2009 \*

Game Date: Start 8/1/09      End 8/31/09      Reload

10 assessment(s) found: Start: 8/1/09 End: 8/31/09									
Gm # / Status	Date & Time	Teams	Type	Official	Cur Grade	Results	Released? *	Assessor	
ASMT-22740 Approved	8/1/09 12:00pm (Saturday)	HOEM TEAM TEST... vs. AWAY TEMA TEST...	(U)pgrade	Referee	TEST4, REF		90	Yes	DEMO ASSR
			(U)pgrade	AR1	TEST5, REF		80	Yes	
			(M)aintenance	AR2	TEST1, REF1 / (06)		75	Yes	
ASMT-22755 New	8/1/09 12:00pm (Saturday)	BARRACUDA_DEMO vs. TIGERS_DEMO	N/A	Referee	TEST1, REF1 / (06)		TBD	No	DEMO ASSR
ASMT-22752 Approved	8/12/09 1:00pm (Wednesday)	TEAM 1 vs. TEAM 2	(U)pgrade	Referee	TEST1, REF1 / (06)		80	Yes	DEMO ASSR
			(M)aintenance	AR1	TEST2, REF2 / (07)		79	Yes	
			(M)aintenance	AR2	TEST3, AG / (08)		78	Yes	
ASMT-22747 Approved	8/25/09 7:00pm (Tuesday)	BARRACUDA_DEMO vs. TIGERS_DEMO	(M)aintenance	Referee	TEST1, REF1 / (06)		73	Yes	DEMO ASSR
			(U)pgrade	AR1	TEST2, REF2 / (07)		76	Yes	
			(U)pgrade	AR2	TEST3, REF3 / (07)		76	Yes	

\* Assessment is Visible to Official when logged in

Once the screen has reloaded, select the game you wish to view by clicking in the game number in green.

Select the official's assessment you wish to view. You can either view online or a PDF file. You may save or print the PDF file once it is loaded.

**Individual Assessments** (Released: 8/27/09 8:16PM CST) Officials, Position, Type

	Official	Position	Type	Result	Released to Official
<a href="#">View Assmnt</a> or	REF1 TEST1	Referee	(M)aintenance	73	Yes <a href="#">(Click to Hide)</a>
<a href="#">View Assmnt</a> or	REF2 TEST2	AR1	(U)pgrade	76	Yes <a href="#">(Click to Hide)</a>
<a href="#">View Assmnt</a> or	REF3 TEST3	AR2	(U)pgrade	76	Yes <a href="#">(Click to Hide)</a>

[Email Assessments to Crew](#)

## **OFFICIALS – ONLINE ASSESSMENT SYSTEM**

Referees and assessors registered in the current year are in [ussoccer.gameofficials.net](http://ussoccer.gameofficials.net). Grade 9 referees are not included in the system.

The referee's and assessor's information is taken from the U.S. Soccer Referee Registration database. If there is any question about that information, please contact your SRA/SDA.

## **WEB LINK**

Website      [ussoccer.gameofficials.net](http://ussoccer.gameofficials.net)